



Breed: Fleckvieh
Breeder: -
Natural (CZ): not available

PACTOLE FR 5245423226	MISTIK FR 116033765	JILBEER	gGZW 112
JHB VENDY 6 CZ 422.047.953 122/122/+809+0,03-0,01	NOISETT FR 6868643565	JOLIMOME	
	MAULEON FR 6950916473	GARGANO	MW 121 FW 79 FIT 107
	JHB VENDY 4 CZ 421.511.953	JORDREN JB	

BREEDING VALUES (13.08.2024) **GYB** **gGZW 112 (63)**

GZW -4, MW -2, FW +0, FIT -2

MILK **+819 -0,06 +29 -0,01 +28** **MW 121 (76)**

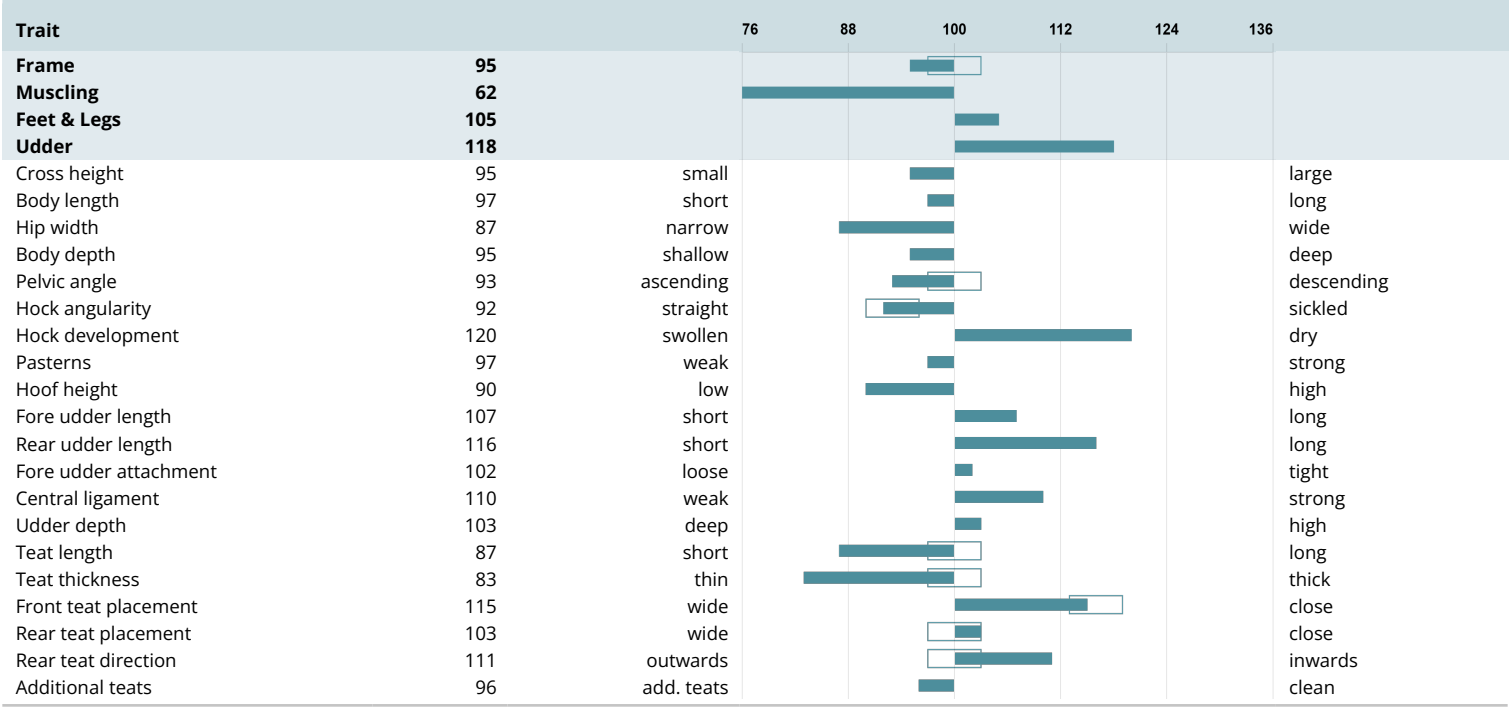
BEEF **FW 79 (55)**

Net daily gain: 79 (56) **Carcass percentage:** 94 (57) **EUROP trade class:** 75 (52)

FITNESS **ÖZW 113 (70)** **FIT 107 (67)**

Longevity: 107 (55)	Udder health index: 112 (69)	Somatic cell count: 114 (63)	Mastitis: 102 (32)
Persistence: 107 (65)	Fertility index: 93 (52)	Claw health index: 107 (49)	Early fert. disorders: 99 (43)
Yield improvement: 108 (62)	Calving ease direct: 110 (71)	Calving ease maternal: 98 (57)	Cysts: 98 (44)
Milking speed: 90 (70)	Milking behaviour: 101 (41)	Calf vitality: 108 (52)	Milk fever: -

CONFORMATION **0 daughters: 95 - 62 - 105 - 118 (66)**



Free of: ARF, B2F, DWF, F2F, F5F, TPF, ZLF
Genetic charac.: Beta casein A2A2, Kappa casein AB

